



Arizona Employer-Based Child Care Design Lab

Boost Your Recruitment, Retention and Workforce Engagement Strategy

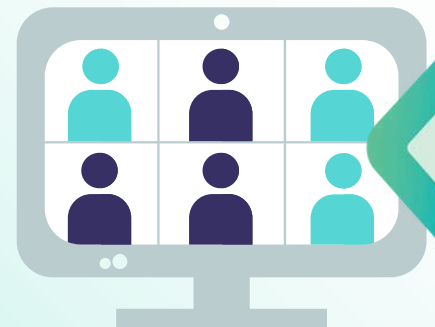
This August, join the Design Lab to discover innovative **child care solutions** that can break down the top 3 barriers to child care: availability, affordability, and flexibility. Learn more: epicimpact.org/AZDesignLab

Through four virtual workshops and two 1:1 coaching sessions, you will:

- ✓ Explore innovative child care solutions that strengthen your recruitment and retention strategies.
- ✓ Create a custom, data-driven plan tailored to your business – ready for immediate implementation.
- ✓ Connect with peers and gain valuable insights through a collaborative, cohort-based experience.
- ✓ Learn from leading experts to identify child care approaches that align with your business goals and meet employee needs.

Learn more about the Design Lab by joining a webinar:

- If you can amplify this opportunity to business leaders, [register here](#).
- If you are a business leader interested in learning more, [register here](#).



Did you know?

Arizona employers lose **\$958 million** annually due to child care challenges faced by their workforce:

59%

parents report being “distracted” or “unproductive” due to child care challenges.

61%

parents report missing a full day of work; 41% report having missed shifts.

37%

working parents have changed jobs to meet child care needs.

\$14,040

is the average annual cost of infant care in a center in Arizona, more than the \$12,183 cost for in-state public college tuition.

Your workforce is struggling under the weight of high housing and child care costs. **Take action today** on easing the burden, starting with child care.

Businesses participating in the Design Lab will:

- Identify a dedicated point person who has:
 - Direct access to decision-makers at their organization as well as personnel data.
 - Two hours a week from August through October to drive this work within their organization.
- Have C-Suite sponsorship or buy-in.
- Contribute \$5,000 to participate in this experience.
 - Participation will be prioritized based on application strength. Reach out to discuss options if participation cost is a barrier.



The Arizona Employer-Based Child Care Design Lab is facilitated by Executives Partnering to Invest in Children (EPIC) in partnership with:



United Way of Graham
& Greenlee Counties



United Way
of Northern Arizona




FIRST THINGS FIRST