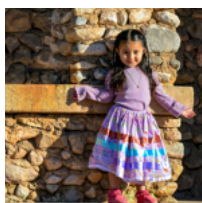


Kingman Area Resource Guide

Servicing: Chloride, Dolan Springs, Golden Valley, Hackberry, Temple Bar
Marina, Truxton, Valentine, Valley Vista, White Hills, Wikieup, and Yucca

FOR FAMILIES WITH CHILDREN BIRTH TO AGE 5



2025-2026

FIRST THINGS FIRST

About First Things First

Approved by Arizona voters, First Things First (FTF) works to ensure that your youngest children have access to quality early childhood experiences so they will start school healthy and ready to succeed. Across the state, FTF Regional Partnerships Councils — in collaboration with local leaders — identify the education and health needs of children birth through age 5 in their communities and fund strategies to address those needs.

Phone: 928-854-8732

Address: 1940 Mesquite Avenue Suite E
Lake Havasu City, AZ 86403

Website: www.FirstThingsFirst.org
FirstThingsFirst.org/Regions/La-Paz-Mohave/



Scan here to view the
most recent version
of this guide

Disclaimer

The listing of private companies and services in this guide is not an endorsement or recommendation of those companies or their services by First Things First. First Things First is not responsible or liable for your use of these companies and services. The publishers have taken every reasonable measure to ensure the information in this resource guide is accurate. In the event any information is inaccurate, the publishers assume no liability for damages incurred directly or indirectly as a result of incomplete, incorrect or omitted information. Inclusion of the agency in this directory does not constitute an endorsement of the agency nor their services. If you identify information that is incorrect, please notify First Things First, La Paz/Mohave regional office at 928-854-8732.

TABLE OF CONTENTS

Assistance Programs	4-5
Birth to Five Resources	6-9
Breastfeeding Resources	6
Child Care Resources	6
Home Visitation	7
Other	8-9
Child Care Centers	9-10
Disabilities & Special Needs Resources	10-11
Early Intervention Information	12
Education	14-15
Emergency/Non-emergency	17
Health Services	18-20
Dental	18
Mental Health	18-19
Pediatricians	20
FQHCs (Federally Qualified Health Centers are outpatient clinics that serve rural areas)	20
Libraries	21
Nutrition and Food Resources	22
Notes	23-24
Index	25-26

CHILDREN AND FAMILY SERVICES

Assistance Programs

Arizona Department of Economic Security (AZDES)

2400 Airway Ave.
Kingman, AZ 86409
Nutrition, Cash and Medical Assistance
855-432-7587
Child Care Assistance
928-753-6621
Child Support Assistance
928-753-5105
<https://des.az.gov/>

Basic Needs: Adult Protections Services, Food Assistance, Medical Assistance (www.healthearizonaplus.gov), Refugee Resettlement, Shelter and Housing

Child and Family: Cash Assistance, Child Care, Child Support Services, Community Resources

Disabilities: Developmental Disabilities, Early Intervention, Achieving a better life experience

Older Adults: Home and Community Based Services, Healthy Living, Medicare Assistance, Legal Services Assistance, Family Caregiver Support, LongTerm Care Ombudsman, Aging Publications, World Elder Abuse Awareness Day Conference

Employment: Job Seekers, Reentry Services, Employer Resources, Apprenticeship, Unemployment-Employer, Senior Community Service Program, Veterans, Workforce Innovation and Opportunity Act, Eligible Training Provider List

APS Crisis Bill Assistance Program WACOG

928-753-6247

Provides utility assistance. They offer other services ranging from weatherization of homes to cut energy cost to rental assistance on a case by case basis.

CASA Council Helping Children of Mohave County/La Paz County

Beverly Siemens
Board President
530-632-5567
casasupport.org

CASA Council is a 501(c)(3) non-profit organization, which is a foundation that raises money to benefit the unmet needs of children in out-of-home care (foster care, relative placements, and In-Home Services).

CHILDREN AND FAMILY SERVICES

Assistance Programs

Community Legal Services

2701 E. Andy Devine, Suite 400

Kingman, AZ 86401

P: 928-681-1177

1-800-255-9031

TTY: Arizona Relay: 711

F: 928-681-5998

Email: infomoco@clsaz.org

Community Legal Services (CLS) is dedicated to providing legal assistance, advice or representation, self-help materials and legal education so people can know their rights. We focus on helping survivors of domestic violence; assisting victims of consumer fraud and abuse, protecting tenants from unlawful/unfair practices by landlords, foreclosures, legal problems affecting agricultural workers, wage claims and other employment matters, and federal and state programs affecting peoples' health and economic stability.

Cornerstone Mission Project, Inc

3049 Sycamore Ave

Kingman, AZ 86409

928-757-1535

Provides a faith-based resource center for people who are homeless.

Services: Public showers, soup kitchen, housing related coordinated entry

River Cities United Way

928-855-6333

Helping Businesses and individuals with rent utilities, and various needs.

Salvation Army

543 E. Andy Devine Ave.

Kingman, AZ 86401

928-718-2600

Provides food, clothing, and utility payment assistance to people in need.

Social Security Office

1502 Bailey Ave.

Needles, CA 92363

800-772-1213

Obtain social security cards, name change, social security benefits.

CHILDREN AND FAMILY SERVICES

Birth to Five Resources:

Breastfeeding Resources

Arizona 24/7 Breastfeeding Hotline

1-800-307-4231

La Leche League

1-877-452-5324

<https://llusa.org/>

Pregnancy and Breastfeeding Hotline

1-800-833-4642

Birth to Five Resources:

Child Care Resources

Child Care Resource & Referral Child and Family Resources, Inc.

1-800-308-9000

www.azccrr.com

M-F 8:00 AM - 6:00 PM,

Sat 8:00 AM - 12:00 PM

Child Care Information Line:

1-800-308-9000

Child Care Resource & Referral, CCR&R, is a statewide program of Child & Family Resources, Inc. Funding is provided by the Arizona Department of Economic Security's Child Care Administration through federal Child Care Development Block Grant funds. Staff provides referrals to families including but not limited to: child care, financial assistance, housing/utility assistance. Staff also provides consumer education on the different types of childcare options in the state & how to make the best option for your child and family.

CHILDREN AND FAMILY SERVICES

Birth to Five Resources:

Home Visitation

Health Start Program Mohave County Department of Public Health

700 W. Beale St.
Kingman, AZ 86401
JoBeth Giovanardi
GiovaJ@mohave.gov
928-753-0714 ext. 4323

Community home visitation program that collaborates with pregnant women and their families. The goal of Health Start is to give your child and family the best chance of success with a strong support system through education, development, and referrals to community resources.

Healthy Families Program Child and Family Resources, Inc.

625 E. Beale Street
Kingman, AZ 86401
928-753-4410
Jo Harper
jharper@cfraz.org
928-753-4410

Home visitation program, families can enroll while pre-natal or before the baby turns 3 months old. The program also includes a car seat safety program, assistance with diapers and community based referrals as needed.

High Risk Perinatal Program Mohave County Department of Public Health

700 W. Beale St.
Kingman, AZ 86401
JoBeth Giovanardi
GiovaJ@mohave.gov
928-753-0714 ext. 4323

Provides free in-home community health nursing services to assist eligible families and their newborns during the transition from the Newborn Intensive Care Unit (NICU) to their home and community. The CHN provides support to the family by providing education and connections to community resources.

Eligibility: Infants who have spent five or more days in the NICU.

CHILDREN AND FAMILY SERVICES

Birth to Five Resources:

Other

Advice And Aid Pregnancy Center

2975 Northern Ave.
Kingman, AZ 86409
928-692-1301

www.pregnancyadviceaid.org

Free pregnancy tests, free ultrasounds for 9-14 weeks, individual pregnancy counseling, post abortion counseling, education and information on options and alternatives, referrals for prenatal and childbirth classes, clothing (0-5 and maternity), diapers, wipes, formula and furniture for mothers and families. Love, Care and Encouragement.

First Things First

1940 Mesquite Ave Suite E
Lake Havasu City, AZ 86403
928-854-8732

www.FirstThingsFirst.org

Local region covers Mohave and La Paz County

First Things First is Arizona's early childhood agency, with programs and resources to support great childhoods. By focusing on the first five years, we are making a difference in the lives of young children, their families and our communities. Quality early learning and child care are essential for stronger, healthier families and for the economic future of Arizona.

Birth to Five Helpline

1-877-705-KIDS (5437)

The Birth to Five Helpline is a free service available to all Arizona families with young children, as well as parents-to-be, with questions about their infants, toddlers and preschoolers.

(see page 27 for more information)

Family Support Coordination Parenting Arizona

Hanany Topete
602-684-1192

Chicanos Por La Causa/Parenting Arizona's Family Support Coordination program supports families with children age birth to 5. Our goal is to assist them in understanding, accessing, and navigating services that promote family well-being by engaging families and connecting them with community resources. Family Support Coordinators provide guidance, advocacy, and coordination throughout the process. Our aim is to refer families to timely and essential services, fostering family well-being and self-sufficiency.

CHILDREN AND FAMILY SERVICES

Birth to Five Resources:

Other

Lantern

(Formerly Bright By Text)

Text "ARIZONAPBS" to 274448
www.azpbs.org/kidstext

Bright by Text is a free program for parents and caregivers that sends tips and resources promoting child development, targeted to a child's age from prenatal to 11 years old, right to their cell phone.

Sleep in Heavenly Peace

844-432-2337 x5101
shpbeds.org/chapter/az-kingman/
Volunteers build beds for children and youth that need them.

Child Care Centers

Bright Beginnings Childcare Center

810 Eastern St
Kingman, AZ 86401
928-418-0584

Child care center servicing children birth to the age of 12. Accepts DES subsidy.

Grace Neal Preschool

1730 Kino Ave.
Kingman, AZ 86409
928-692-8830

Childcare services birth through 12 years of age. Accepts DES Subsidy.

Kingman Gingerbread House

4145 N. Bank St.
Kingman, AZ 86409
928-757-7977

Childcare services provided for families with infants to school age. Accept DES Subsidy.

Lily Pad Preschool and Daycare Center

1099 Sunrise Ave.
Kingman, AZ 86401
928-718-4482

Center provides services to ages 1 to 12 years of age. Accepts DES Subsidy.

CHILDREN AND FAMILY SERVICES

Child Care Centers

Little Knights and Ladies Child Development Center, Inc.

1911 Kino Ave.
Kingman, AZ 86409
928-529-5287
Open 7am.-6pm.

Childcare service for families with children Ages 1-5 years old. Accepts DES subsidy.

Little Minnows Learning Center

3348 Western Ave.
Kingman, AZ 86409
928-757-3144
Open 6am.-8pm.

Childcare services with families with children ages 6 weeks- 12 years old.

SLS Family Child Care Provider

928-733-7836
Open Monday - Thursday

Local registered child care provider taking children ages 2 and up. Times and availability discussed by appointment only, please call the contact number above.

Disabilities & Special Needs Resources

Arizona Center for Disability Law, Inc

<https://www.azdisabilitylaw.org>

Arizona Early Intervention Program (AZEIP)

A statewide system of services and supports for families of infants and toddlers, birth to three years of age, with delays or disabilities. AZEIP provides eligible children and their families access to services to support the child's development through in-home individualized parent education and support. AZEIP has service-providing agencies located in your area.

For more information or to make a referral, visit the website - bit.ly/3S6GK4l or make a referral by calling 888-592-0140

For questions or to check the status of the referral call 602-532-9960

CHILDREN AND FAMILY SERVICES

Disabilities & Special Needs Resources

Encircle Families

(Formerly Raising Special Kids)

5025 E. Washington St. Ste. 204

Phoenix, AZ 85034

602-242-4366

www.raisingpecialkids.org

Raising Special Kids exists to improve the lives of children with the full range of disabilities, from birth to age 26, by providing support, training, information and individual assistance so families can become effective advocates for their children.

RISE Services

2519 Airway Ave.

Kingman, AZ 86409

928-753-5889

Provides support services for children, adults and seniors with developmental and physical disabilities.

Essential Therapy Solutions Clinic

1912 Miami

Kingman, AZ 86401

480-677-3349

<https://www.etherapyaz.com>

Essential Therapy Solutions offers various services and programs in both home and clinic settings.

Essential Therapy Solutions contracts with AzEIP to help children birth to 3 years of age and with the Division of Developmental Disabilities (DDD) for children and some adults 3+ years. We also accept families with insurance as well as cash pay. The services we provide are Speech Therapy, Occupational Therapy, Physical Therapy, Feeding Therapy, Service Coordination, Developmental Instruction and Telehealth.

CHILDREN AND FAMILY SERVICES

Early Intervention Information

What is Early Intervention?

Early Intervention is specialized support for infants and toddlers (birth to age 3) who have or may be at risk for developmental delays. It includes services like speech therapy, physical therapy and developmental support to help children reach important milestones.

Why is Early Intervention Important?

Early support can improve a child's growth, learning and future success. It helps children become more independent, improves school readiness and may reduce long-term therapy costs.

What Can I Do if I Have Concerns?

Talk to your child's pediatrician – Don't wait! Early action makes a difference.

Check developmental milestones – Use the CDC Milestone Tracker App (free on iOS & Android) or search CDC Milestone Checklist online.

Request a developmental screening – Ask your doctor or complete a free Ages & Stages Questionnaire (ASQ)
<https://www.firstthingsfirst.org/resources/ages-and-stages/>

Get an evaluation – See more info below.

How do I get my child evaluated?

If your child is Birth to Age 3:

Contact the Arizona Early Intervention Program where you can refer your child for evaluation. Scan the QR Code for more information.



If your child is age 3 to 21:

Contact your local school district to learn about Child Find events or request an evaluation. With parent permission, a home visitor, child care provider, teacher or healthcare provider can also refer the child for evaluation. Scan the QR Code for more information.



FIRST THINGS FIRST Ages & Stages

Available in
English and
Spanish



From the day your child is born, understanding how they play, learn, speak, act and move offers important clues about your child's development. While all children develop differently, it helps to know if your child is meeting typical milestones at different ages and stages and how you can support their healthy development. Understand what's happening at different stages of your child's life and how you can help them learn and grow.

VISIT [FirstThingsFirst.org/AgesAndStages](https://www.FirstThingsFirst.org/AgesAndStages)

CHILDREN AND FAMILY SERVICES

Education

Building Blocks Preschool

2040 Golden Gate Ave
Kingman, AZ 86401
928-753-5699

Child Care Center serving children birth to age 12. Accepts DES subsidy.

Emmanuel Christian Academy

3120 Hualapai Mountain Rd.
Kingman, AZ 86401
928-681-4220

Private Christian School for ages pre-k through 8th grade.

Kingman Academy of Learning- Primary School

3400 N. Burbank St.
Kingman, AZ 86409
928-692-2500

Charter schools providing services to families with children in preschool through high school.

Kingman Unified School District

3033 MacDonald Ave
Kingman, AZ 86401
928-753-5678

Provides academic instruction for students in pre-K through grade 12. Homeless School Transition Program, Special Education Classes/Centers.

Little Brick Schoolhouse

2302 Lilly Ave.
Kingman, AZ 86401
928-753-5439

Preschool services for families with children ages 3-12 years old.

Little Eagle Preschool

1475 Gordon Dr.
Kingman, AZ 86409
928-757-7888

Open 6am.-6pm.

Preschool services provided to families with children ages 3-5 years. Accepts DES subsidy.

Little Explorers Preschool

3175 Gordon Dr.
Kingman, AZ 86409
928-753-6413

Preschool, Junior Kindergarten, and Special Needs programs available. Accepts DES subsidy.

CHILDREN AND FAMILY SERVICES

Education

WACOG Head Start - Brian Meyer-Davis

601 Van Buren St.
Kingman, AZ 86401
928-753-8730

Center based early childhood development program. Eligibility Requirements: Income guidelines and age (3 & 4 years old by August 31). Priority to children with disabilities, homeless, foster children, lowest income.

WACOG Head Start - Cerbat

2689 Jagerson Ave.
Kingman, AZ 86409
928-757-7574

Center based early childhood development program. Eligibility Requirements: Income guidelines and age (3 & 4 years old by August 31). Priority to children with disabilities, homeless, foster children, lowest income.

WACOG Head Start - Golden Valley

3404 Santa Maria Rd.
Golden Valley, AZ 86413

Center based early childhood development program. Eligibility Requirements: Income guidelines and age (3 & 4 years old by August 31). Priority to children with disabilities, homeless, foster children, lowest income.

WACOG Head Start - Hubbs House

421 Golconda St.
Kingman, AZ 86401
928-753-1066

Center based early childhood development program. Eligibility Requirements: Income guidelines and age (3 & 4 years old by August 31). Priority to children with disabilities, homeless, foster children, lowest income.

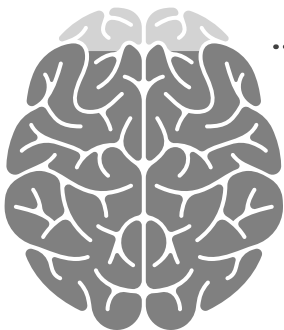
WACOG Head Start - Kingman North

1971 Jagerson Ave. Bldg. 700
Kingman, AZ 86409

Center based early childhood development program. Eligibility Requirements: Income guidelines and age (3 & 4 years old by August 31). Priority to children with disabilities, homeless, foster children, lowest income.

Why Early Childhood Matters

From birth to age 5, a child's brain grows more than at any other time in life. And early brain development has a lasting impact on a child's ability to learn and succeed in school and life. The quality of a child's experiences in the first few years of life – positive or negative – helps shape how their brain develops.



90%

**of Brain Growth Happens
Before Kindergarten**

At birth, the average baby's brain is about a quarter of the size of the average adult brain. Incredibly, it doubles in size in the first year. It keeps growing to about 80% of adult size by age 3 and 90% – nearly full grown – by age 5.

The brain is the command center of the human body. A newborn baby has all of the brain cells (neurons) they'll have for the rest of their life, but it's the connections between these cells that really make the brain work. Brain connections enable us to move, think, communicate and do just about everything. The early childhood years are crucial for making these connections. At least one million new neural connections (synapses) are made every second, more than at any other time in life.

The early years are the best opportunity for a child's brain to develop the connections they need to be healthy, capable, successful adults. The connections needed for many important, higher-level abilities like motivation, self-regulation, problem solving and communication are formed in these early years – or not formed. It's much harder for these essential brain connections to be formed later in life.

CHILDREN AND FAMILY SERVICES

Emergency/Non-Emergency

Arizona Department of Child Safety

2400 Airway Ave.
Kingman, AZ 86004
928-753-5056
Child Abuse Hotline
1-888-767-2445

AZ Statewide Crisis Line

1-844-534-4673 or 1-844-534-HOPE

Kingman Aid to Abused People

Confidential Location
Kingman, AZ 86401
928-753-4242

Services: Baby clothes donation programs, cleaning product donation programs, domestic violence hotline, domestic violence shelter, housing related coordinated entry, personal grooming supplies, sexual assault hotline, sexual assault shelter, underwear/sleepwear donation program.

Kingman Fire Department

412 E Oak St
Kingman, AZ 86401
Office: 928-753-2891
Fax: 928-753-7597
Email: fire@cityofkingman.gov
Dispatch: 928-753-8050

Kingman Police Department

2730 E Andy Devine Ave.
Kingman, AZ 86401
928-753-2191
Provides emergency response law enforcement and crime prevention services for the city.

Mohave County Sheriff's Office

600 W. Beale Street
Kingman, AZ 86401
928-753-0753

The Sheriff's office duty is to serve the Civil Processes and legal documents originating from Arizona Superior Courts, Justice Courts; attorneys, private individuals and out of state entities needing service in Mohave County. Seventy-five members of the Sheriff's office assist the Sheriff by carrying out search and rescue missions and other duties.

CHILDREN AND FAMILY SERVICES

Health Services

Community Health Outreach Workers

River Cities United Way

928-855-6333

Community Health Outreach Workers will work closely with medical providers, primary care teams, and other agencies to improve patient care and outcomes.

Mohave County Health Department

700 Beale St.

Kingman, AZ 86402

928-753-0714

Mailing Address: PO Box 7000

Kingman, AZ. 86402

Family Planning Clinics, Environmental Health Programs, Mental Health Services, Nutrition Programs, Vaccination Programs, Woman, Infant and Children Program (WIC), Women's Health Programs.

Birth & Death Certificates, Vital Records, Flu & Pneumonia Shots, HIV & STD testing, Laboratory Services.

Health Services:

Dental

Just For Kids Dentistry

2401 Stockton Hill Rd # 1

Kingman, AZ 86401

928-718-7188

Kids Little Smiles

2202 Hualapai Mountain Rd

Kingman, AZ 86401

928-718-7645

Pediatric dental provider.

Health Services:

Mental Health

M.I.K.I.D. - Kingman

2615 E. Beverly Ave.

Kingman, AZ 86409

928-753-4354

www.mikid.org/

Provides support, education, and skill development to families and their children, youth, and young adults who are experiencing mental health and behavior changes.

CHILDREN AND FAMILY SERVICES

Health Services:

Mental Health

Mohave Mental Health Children's Clinic

915 Airway Ave.
Kingman, AZ 86409
928-718-4800
www.mmhc-inc.org

Outpatient clinics offer a full array of behavioral health services to both children and adults. Services may include assessment, psychiatric interventions, therapy and counseling (provided in individual, family, and groups), medication, residential or inpatient programs, case management, vocational services, and living skills training. Other supportive services, such as peer support services, health promotion, and family support services are also offered, geared towards helping individuals and families develop additional self-awareness and specialized recovery skills to improve independent functioning and quality of life. All services are provided by qualified behavioral health staff and are driven by a service plan developed by the client and the client's child and family team or adult recovery team.

Postpartum Support International Helpline

Call/Text in English:
1-800-944-4773
Text en Español: 971-203-7773
<https://postpartum.net/>

The HelpLine will provide you with support and resources. You will be asked to leave a confidential message and a trained and caring volunteer will return your call or text.

In an emergency or crisis situation, call or text 988.

In a non-emergency situation, call or text the HelpLine at 800-944-4773. You never need a diagnosis to ask for help.

Call or text the National
#MaternalMentalHealth Hotline at
1-833-TLC-MAMA (1-833-852-6262)

Southwest Behavioral Health Outpatient Clinic

2215 Hualapai Mountain Rd. Ste H
Kingman, AZ 86401
928-753-9387
www.sbhservices.org

Services provided: Individual, Group and Family Counseling, Medication Services, Psychiatric Care, Skills Training, Case Management, Vocational Services, DUI Education, and DV Education.

CHILDREN AND FAMILY SERVICES

Health Services:

Pediatrics

Family Practice Residency Clinic

3801 Santa Rosa Drive Ste #400
Kingman, AZ 86401
928-681-8701

KRMC's Family Practice Residency Clinic offers comprehensive medical care to people of all ages, from newborns to senior adults. Whether you're ill or simply in need of a check-up, our family medicine residents will provide you thorough, attentive medical care.

Joshua Tree Pediatrics

2202 Stockton Hill Rd. #100
Kingman, AZ 86401
928-681-8706

At Joshua Tree Pediatrics, our skilled pediatricians and support staff provide a full range of healthcare services for children 0-18. From routine health maintenance and preventative care to diagnosing and treating complex medical problems, we are here to assure your child's maximum health and wellbeing at each stage in their development.

Health Services:

FQHC

(Federally Qualified Health Centers are outpatient clinics that serve rural areas)

Kingman Family Walk-in Clinic Regional Center for Border Health

2302 Stockton Hill Rd. Suite G
Kingman, AZ 86401

Family Primary Care:

Immunizations, family planning services, woman and teens health, laboratory services, and chronic disease management.

Behavioral Health: Intake, assessments, referral services, children and adult services, substance abuse, evaluation and treatment, general mental health therapy, psychiatric health and medication management.

North Country Healthcare

Dr. Tiffany Russell
1510 Stockton Hill Rd.
Kingman, AZ 86401
928-753-1177

North Country HealthCare's doctors and care providers are dedicated to providing primary care to you and your whole family. Our family practice offers walk-ins and same day appointments for routine and sick visits. We accept most insurance plans and offer affordable payment options for those who are uninsured or underinsured. Our low-cost options include a sliding fee scale discount program which is based on income and family size.

CHILDREN AND FAMILY SERVICES

Libraries

Mohave County Library - Dolan Springs

16140 Pierce Ferry Road
Dolan Springs, AZ 86441
928-767-4292

Call for current hours

Library loans books, e-books, audio books, videotapes, CDs and DVDs.

Mohave County Library - Golden Valley

4901 Pay Roll Ave.
Chloride, AZ 86431
928-565-2200

Call for current hours

Library loans books, e-books, audio books, videotapes, CDs and DVDs.

Mohave County Library - Golden Valley

3417 Verde Rd.
Golden Valley, AZ 86413
928-565-2989

Call for current hours

Library loans books, e-books, audio books, videotapes, CDs and DVDs.

Mohave County Library - Kingman

3269 N. Burbank St
Kingman, AZ 86409
928-692-2665

Services: Book loan, document copying services, faxing, public access computers, public internet access, family story time, after school fun for kids.

Mohave County Library - Meadview

149 E Meadview Blvd.
Meadview, AZ 86444-0187
928-564-2535

Call for current hours

Library loans books, e-books, audio books, videotapes, CDs and DVDs.

Mohave County Library - Valle Vista

7264 Concho Dr. Ste B
Kingman, AZ 86401
928-692-7662

Call for current hours

Library loans books, e-books, audio books, videotapes, CDs and DVDs.

CHILDREN AND FAMILY SERVICES

Nutrition and Food Resources

Happy Hearts Consignment/ Thrift Store

5317 Hwy 68
Golden Valley, AZ 86413
goldenvalleyfamilyresources@gmail.com
Food Distribution

Kingman Area Food Bank

2930 E Butler Ave.
Kingman, AZ 86409
928-757-4165
Provides emergency food boxes once
every 30 days if needed.

Salvation Army

1200 E. Andy Devine Ave.
Kingman, AZ 86401
928-718-2600
Provides food, clothing, and utility
payment assistance to people in
need.

WIC Program

Mohave County Department of Public Health

700 W. Beale St.
Kingman, AZ 86402
928-753-0794 ext. 4334
8am-6pm M-Thurs
8am-12pm Friday
Supplemental healthy foods,
nutrition education, referrals to
other health services Prenatal-5
years of age qualify.

NOTES

This image shows a single sheet of white paper with horizontal ruling lines. The lines are evenly spaced and run across the width of the page. There are no margins, text, or other markings on the paper.

NOTES

This image shows a single sheet of white paper with horizontal ruling lines. The lines are evenly spaced and run across the width of the page. There are no margins, text, or other markings on the paper.

INDEX

Advice And Aid Pregnancy Center 8

APS Crisis Bill Assistance Program..... 4

Arizona 24/7 Breastfeeding Hotline 6

Arizona Center for Disability Law, Inc 10

Arizona Department of Child Safety 17

Arizona Department of Economic Security (AZDES) 4

Arizona Early Intervention Program (AZEIP) 10

AZ Statewide Crisis Line 17

Birth to Five Helpline 8,27

Bright Beginnings Childcare Center 9

Building Blocks Preschool..... 14

CASA Council Helping Children of Mohave County/La Paz County 4

Child Care Resource & Referral 6

Community Health Outreach Workers 18

Community Legal Services 5

Cornerstone Mission Project, Inc 5

Emmanuel Christian Academy 14

Encircle Families 11

Essential Therapy Solution Clinics 11

Family Practice Residency Clinic 20

Family Support Coordination 8

First Things First 8

Grace Neal Preschool 9

Happy Hearts Consignment/ Thrift Store 22

Healthy Families Program 7

Health Start Program 7

High Risk Perinatal Program 7

Joshua Tree Pediatrics 20

Just For Kids Dentistry 18

Kids Little Smiles 18

Kingman Academy of Learning - Primary School 14

Kingman Aid to Abused People 17

Kingman Area Food Bank 22

Kingman Family Walk-in Clinic 20

Kingman Fire Department 17

INDEX

Kingman Gingerbread House 9

Kingman Police Department 17

Kingman Unified School District 14

La Leche League 6

Lantern 9

Lily Pad Preschool and Daycare Center 9

Little Brick Schoolhouse 14

Little Eagle Preschool 14

Little Explorers Preschool 14

Little Knights and Ladies Child Development Center, Inc. 10

Little Minnows Learning Center 10

M.I.K.I.D. 18

Mohave County Health Department 18

Mohave Mental Health Children's Clinic 19

Mohave County Library 21

Mohave County Sheriff's Office 17

North Country Healthcare 20

Pregnancy and Breastfeeding Hotline 6

Postpartum Support International Helpline 19

RISE Services 11

River Cities United Way 5

Salvation Army 5,22

Sleep in Heavenly Peace 9

SLS Family Child Care Provider 10

Social Security Office 5

Southwest Behavioral Health Outpatient Clinic 19

Wacog Head Start 15

WIC Program 22



www.swhd.org

"Nothing Out of the Question"
"Toda Pregunta es Buena"

1-877-705-KIDS (5437)

Call the Helpline to speak with an early childhood specialist, on duty Mon-Fri. 8:00 a.m. to 8:00 p.m.

The Birth to Five Helpline is a free service available to all Arizona families with young children, as well as parents-to-be, with questions about their infants, toddlers and preschoolers.

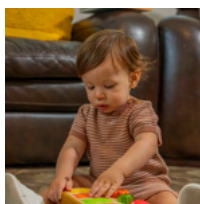
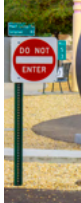
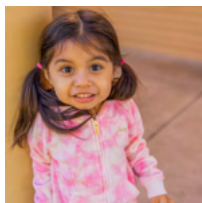
Topics addressed include but not limited to:

- Sleep
- Health and Nutrition
- Safety
- Challenging Behaviors
- Feeding and Eating
- General Child Development
- Potty Training/Learning
- Fussiness/Colic
- Parenting

An extension of the Birth to Five Helpline is the Fussy Baby program. This program provides telephone, home visiting and virtual video consultation and support to help families navigate challenges associated with hard-to-soothe infants, excessive crying, sleeping problems and feeding difficulties during their child's first year of life.

Download the Birth to Five Helpline app!





FIRST THINGS FIRST