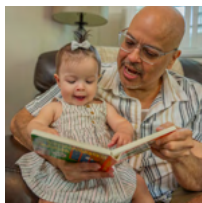
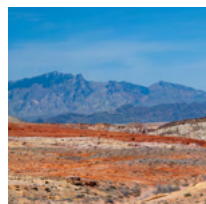


Beaver Dam/ Littlefield/Scenic Resource Guide

FOR FAMILIES WITH CHILDREN BIRTH TO AGE 5



2025-2026

 FIRST THINGS FIRST

About First Things First

Approved by Arizona voters, First Things First (FTF) works to ensure that your youngest children have access to quality early childhood experiences so they will start school healthy and ready to succeed. Across the state, FTF Regional Partnerships Councils — in collaboration with local leaders — identify the education and health needs of children birth through age 5 in their communities and fund strategies to address those needs.

Phone: 928-854-8732

Address: 1940 Mesquite Avenue Suite E
Lake Havasu City, AZ 86403

Website: www.FirstThingsFirst.org
FirstThingsFirst.org/Regions/La-Paz-Mohave/



Scan here to view the
most recent version
of this guide

Disclaimer

The listing of private companies and services in this guide is not an endorsement or recommendation of those companies or their services by First Things First. First Things First is not responsible or liable for your use of these companies and services. The publishers have taken every reasonable measure to ensure the information in this resource guide is accurate. In the event any information is inaccurate, the publishers assume no liability for damages incurred directly or indirectly as a result of incomplete, incorrect or omitted information. Inclusion of the agency in this directory does not constitute an endorsement of the agency nor their services. If you identify information that is incorrect, please notify First Things First, La Paz/Mohave regional office at 928-854-8732.

TABLE OF CONTENTS

| | |
|---|--------------|
| Assistance Programs | 4-5 |
| Birth to Five Resources | 5-9 |
| Breastfeeding Resources | 5 |
| Child Care Resources | 6 |
| Home Visitation | 6-7 |
| Other | 8 |
| Disabilities & Special Needs Resources | 9 |
| Early Intervention Information | 10 |
| Education | 12 |
| Emergency/Non-emergency Resources | 12 |
| Health Services | 13-14 |
| Mental Health | 13 |
| Pediatricians | 14 |
| Nutrition and Food Resources | 14 |
| Notes | 16-17 |
| Index | 18 |

CHILDREN AND FAMILY SERVICES

Assistance Programs

APS Crisis Bill Assistance Program WACOG

928-753-6247

Provides utility assistance. They offer other services ranging from weatherization of homes to cut energy cost to rental assistance on a case by case basis.

Arizona Department of Economic Security (AZDES)

1057 Vista Ave.

Page, AZ 86040

928-645-8131

<https://des.az.gov/>

Basic Needs: Adult Protective Services, Food Assistance, Medical Assistance (www.healthearizonaplus.gov), Refugee Resettlement, Shelter and Housing

Child and Family: Cash Assistance, Child Care, Child Support Services, Community Resources

Disabilities: Developmental Disabilities, Early Intervention, Achieving a better life experience

Employment: Job Seekers, Reentry Services, Employer Resources, Apprenticeship, Unemployment-Employer, Senior Community Service Program, Veterans, Workforce Innovation and Opportunity Act, Eligible Training Provider List

Arizona Department of Economic Security (AZDES)

Older Adults: Home and Community Based Services, Healthy Living, Medicare Assistance, Legal Services Assistance, Family Caregiver Support, LongTerm Care Ombudsman, Aging Publications, World Elder Abuse Awareness Day Conference

CASA Council Helping Children of Mohave County/La Paz County

Beverly Siemens

Board President

530-632-5567

casasupport.org

CASA Council is a 501(c)(3) non-profit organization, which is a foundation that raises money to benefit the unmet needs of children in out-of-home care (foster care, relative placements, and In-Home Services).

CHILDREN AND FAMILY SERVICES

Assistance Programs

Community Legal Services

2701 E. Andy Devine, Suite 400
Kingman, AZ 86401
928-681-1177
1-800-255-9031
TTY: Arizona Relay: 711
FAX: 928-681-5998
Email: infomoco@clsaz.org

* Applications for services in Mohave and La Paz Counties are completed via the Kingman office.

Community Legal Services (CLS) is dedicated to providing legal assistance, advice or representation, self-help materials and legal education so people can know their rights. We focus on helping survivors of domestic violence; assisting victims of consumer fraud and abuse, protecting tenants from unlawful/unfair practices by landlords, foreclosures, legal problems affecting agricultural workers, wage claims and other employment matters, and federal and state programs affecting peoples' health and economic stability.

Salvation Army Family Services

742 Pioneer Blvd.
Mesquite, NV 89027
1-800-SAL-ARMY

Provides rent payment assistance, electric and water utility bill payment assistance, food boxes, sack lunches and personal hygiene items.

Social Security Office

1091 N Bluff St #1100
St. George, UT 84770
800-772-1213

Obtain social security cards, name change, social security benefits.

Birth to Five Resources:

Breastfeeding Resources

Arizona 24/7 Breastfeeding Hotline

1-800-307-4231

La Leche League

1-877-452-5324
<https://llusa.org/>

Pregnancy and Breastfeeding Hotline

1-800-833-4642

CHILDREN AND FAMILY SERVICES

Birth to Five Resources:

Child Care Resources

Child Care Resource & Referral Child and Family Resources, Inc.

1-800-308-9000

www.azccrr.com

M-F 8:00 AM - 6:00 PM,

Sat 8:00 AM - 12:00 PM

Child Care Information Line:

1-800-308-9000

Child Care Resource & Referral, CCR&R, is a statewide program of Child & Family Resources, Inc. Funding is provided by the Arizona Department of Economic Security's Child Care Administration through federal Child Care Development Block Grant funds. Staff provides referrals to families including but not limited to: child care, financial assistance and housing/utility assistance. Staff also provides consumer education on the different types of childcare options in the state & how to make the best option for your child and family.

Birth to Five Resources:

Home Visitation

Health Start Program Mohave County Department of Public Health

GiovaJ@mohave.gov

JoBeth Giovanardi

928-753-0714 ext. 4323

Community home visiting program that collaborates with pregnant women and their families. The goal of Health Start is to give your child and family the best chance of success with a strong support system through education, development and referrals to community resources. Health Start enrollment eligibility is prenatal women and families with children up to the age of 2 years old.

CHILDREN AND FAMILY SERVICES

Birth to Five Resources:

Home Visitation

High Risk Perinatal Program Mohave County Department of Public Health

Gioval@mohave.gov

JoBeth Giovanardi

928-753-0714 ext. 4323

Provides free in-home community health nursing services to assist eligible families and their newborns during the transition from the Newborn Intensive Care Unit (NICU) to their home and community. The CHN provides support to the family by providing education and connections to community resources.

Eligibility: Infants who have spent five or more days in the NICU.

Parents As Teachers Child and Family Resources, Inc.

Jo Harper

jharper@cfraz.org

928-753-4410

Home visitation program for Mohave families who are pregnant and/ or have children 0-5. Parents as Teachers (PAT) addresses the need for parent education and family support. Certified Parent Educators are well qualified to provide child development and parenting information with personal home visits, group connections, screenings and referral to resources.

CHILDREN AND FAMILY SERVICES

Birth to Five Resources:

Other

Birth to Five Helpline

1-877-705-KIDS (5437)

The Birth to Five Helpline is a free service available to all Arizona families with young children, as well as parents-to-be, with questions about their infants, toddlers and preschoolers.

(see page 19 for more information)

Family Support Coordination Root For Kids

2044 Mesa Palms Dr,
St. George, UT 84770
435-673-5353

The Root For Kids Family Support Coordinator partners with families to assist with locating community support agencies that provide needed community services.

The Family Support Coordinator completes the Protective Factors Survey with each family. During the survey, the Family Support Coordinator learns about the unique needs of each family, develops a service plan and provides information about the community resources that can address family's concerns. The Family Support Coordinator assists the family in following through with obtaining these resources to allow for success in achieving the goals of the service plan.

First Things First

1940 Mesquite Ave Suite E
Lake Havasu City, AZ 86403
928-854-8732
www.FirstThingsFirst.org

Local region covers Mohave and La Paz County

First Things First is Arizona's early childhood agency, with programs and resources to support great childhoods. By focusing on the first five years, we are making a difference in the lives of young children, their families and our communities. Quality early learning and child care are essential for stronger, healthier families and for the economic future of Arizona.

Lantern

(Formerly Bright By Text)

Text "ARIZONAPBS" to 274448
www.azpbs.org/kidstext

Bright by Text is a free program for parents and caregivers that sends tips and resources promoting child development, targeted to a child's age from prenatal to 11 years old, right to their cell phone.

CHILDREN AND FAMILY SERVICES

Disabilities & Special Needs Resources

Arizona Center for Disability Law, Inc

<https://www.azdisabilitylaw.org>

Arizona Early Intervention Program (AZEIP)

Root For Kids

A statewide system of services and supports for families of infants and toddlers, birth to three years of age, with delays or disabilities. AzEIP provides eligible children and their families access to services to support the child's development through in-home individualized parent education and support. AzEIP has service-providing agencies located in your area.

For more information or to make a referral, visit the website - bit.ly/3S6GK4l or make a referral by calling 888-592-0140

For questions or to check the status of the referral call 602-532-9960

Encircle Families

(Formerly Raising Special Kids)

5025 E. Washington St. Ste. 204
Phoenix, AZ 85034
www.raisingpecialkids.org
602-242-4366

Raising Special Kids exists to improve the lives of children with the full range of disabilities, from birth to age 26, by providing support, training, information and individual assistance so families can become effective advocates for their children.

CHILDREN AND FAMILY SERVICES

Early Intervention Information

What is Early Intervention?

Early Intervention is specialized support for infants and toddlers (birth to age 3) who have or may be at risk for developmental delays. It includes services like speech therapy, physical therapy and developmental support to help children reach important milestones.

Why is Early Intervention Important?

Early support can improve a child's growth, learning and future success. It helps children become more independent, improves school readiness and may reduce long-term therapy costs.

What Can I Do if I Have Concerns?

Talk to your child's pediatrician – Don't wait! Early action makes a difference.

Check developmental milestones – Use the CDC Milestone Tracker App (free on iOS & Android) or search CDC Milestone Checklist online.

Request a developmental screening – Ask your doctor or complete a free Ages & Stages Questionnaire (ASQ)
<https://www.firstthingsfirst.org/resources/ages-and-stages/>

Get an evaluation – See more info below.

How do I get my child evaluated?

If your child is Birth to Age 3:

Contact the Arizona Early Intervention Program where you can refer your child for evaluation. Scan the QR Code for more information.



If your child is age 3 to 21:

Contact your local school district to learn about Child Find events or request an evaluation. With parent permission, a home visitor, child care provider, teacher or healthcare provider can also refer the child for evaluation. Scan the QR Code for more information.



FIRST THINGS FIRST Ages & Stages

Available in
English and
Spanish



From the day your child is born, understanding how they play, learn, speak, act and move offers important clues about your child's development. While all children develop differently, it helps to know if your child is meeting typical milestones at different ages and stages and how you can support their healthy development. Understand what's happening at different stages of your child's life and how you can help them learn and grow.

VISIT [FirstThingsFirst.org/AgesAndStages](https://www.FirstThingsFirst.org/AgesAndStages)

CHILDREN AND FAMILY SERVICES

Education

Beaver Dam Elementary/ Beaver Dam Preschool

PO Box 730
3436 E. Rio Virgin Rd.
Beaver Dam, AZ 86432
928-418-2001
Pre-K through 12th grade.
Preschool is a Quality First star
rated site.

Littlefield/Beaver Dam School District

PO Box 730
3490 E. Rio Virgin Rd.
Beaver Dam, AZ 86432
928-418-2003
Serving families Pre-K through 12th
grade.

Emergency/Non-Emergency

Arizona Department of Child Safety

1057 Vista Ave.
Page, AZ 86040
928-608-4245
Child Abuse Hotline
1-888-767-2445

AZ Statewide Crisis Line

1-844-534-4673 or 1-844-534-HOPE

Beaver Dam/Littlefield Fire District

630 North HWY 91
Littlefield, AZ 86432
Non-Emergency 928-347-5114
Emergency Dial 911
Emergency services.

Beaver Dam Police Department

920-887-0791 ext. 11
Dispatch: 920-386-3726 ext 8

Mohave County Sheriff's Office

700 County Highway 91
Littlefield, AZ 86432
Non-Emergency
928-347-4900
Emergency Services.

CHILDREN AND FAMILY SERVICES

Health Services

Mohave County Department of Public Health

20 S. Colvin St.
Colorado City, AZ 86021
928-875-8960

Services provided include Free immunization clinics for Kids and Adults. The other services we offer are listed under the different programs.

Health Services:

Mental Health

M.I.K.I.D.

928-753-4354
www.mikid.org/

Provides support, education and skill development to families and their children, youth and young adults who are experiencing mental health and behavior changes.

Postpartum Support International Helpline

1-800-944-4773
Text in English: 800-944-4773
Text en Español: 971-203-7773
<https://postpartum.net/>

The HelpLine will provide you with support and resources. You will be asked to leave a confidential message and a trained and caring volunteer will return your call or text.

In an emergency or crisis situation, call or text 988.

In a non-emergency situation, call or text the HelpLine at 800-944-4773. You never need a diagnosis to ask for help.

Call or text the National #MaternalMentalHealth Hotline at 1-833-TLC-MAMA (1-833-852-6262)

CHILDREN AND FAMILY SERVICES

Health Services:

Pediatrics

Canyonlands HealthCare

3272 E. Rio Virgin Rd.
Littlefield, AZ 86432
928-347-5971

Medical Hours Mon.-Fri. 7:30-6:00
Dental Hours Mon.-Thurs. 8:00-5:00
Closed for lunch 12:30-1:30,
Closed Friday

Nutrition and Food Re

Desert Rose Community Food Bank

633-643 Pioneer Rd.
Littlefield, AZ 86432
928-347-5141

Provide food boxes to families in need.

Salvation Army Family Services

742 Pioneer Blvd.
Mesquite, NV 89027
1-800-SAL-ARMY

Provides rent payment assistance, electric and water utility bill payment assistance, food boxes, sack lunches and personal hygiene items.

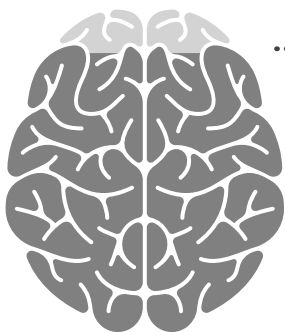
WIC Program Mohave County Department of Public Health

Sunrise Children Foundation
355 W Mesquite Blvd suite d-15
Mesquite, NV 89027
702-346-3030

Supplemental healthy foods, nutrition education, referrals to other health services Prenatal-5 years of age qualify.

Why Early Childhood Matters

From birth to age 5, a child's brain grows more than at any other time in life. And early brain development has a lasting impact on a child's ability to learn and succeed in school and life. The quality of a child's experiences in the first few years of life – positive or negative – helps shape how their brain develops.



90%

**of Brain Growth Happens
Before Kindergarten**

At birth, the average baby's brain is about a quarter of the size of the average adult brain. Incredibly, it doubles in size in the first year. It keeps growing to about 80% of adult size by age 3 and 90% – nearly full grown – by age 5.

The brain is the command center of the human body. A newborn baby has all of the brain cells (neurons) they'll have for the rest of their life, but it's the connections between these cells that really make the brain work. Brain connections enable us to move, think, communicate and do just about everything. The early childhood years are crucial for making these connections. At least one million new neural connections (synapses) are made every second, more than at any other time in life.

The early years are the best opportunity for a child's brain to develop the connections they need to be healthy, capable, successful adults. The connections needed for many important, higher-level abilities like motivation, self-regulation, problem solving and communication are formed in these early years – or not formed. It's much harder for these essential brain connections to be formed later in life.

NOTES

This image shows a single sheet of white paper with horizontal ruling lines. The lines are evenly spaced and run across the width of the page. There are no margins, text, or other markings on the paper.

NOTES

This image shows a single sheet of white paper with horizontal ruling lines. The lines are evenly spaced and run across the width of the page. There are no margins, text, or other markings on the paper.

INDEX

| | |
|--|-------|
| APS Crisis Bill Assistance Program WACOG | 4 |
| Arizona 24/7 Breastfeeding Hotline | 5 |
| Arizona Center for Disability Law, Inc | 9 |
| Arizona Department of Child Safety | 12 |
| Arizona Department of Economic Security (AZDES) | 4 |
| Arizona Early Intervention Program (AZEIP) | 9 |
| AZ Statewide Crisis Line | 12 |
| Beaver Dam Elementary/Beaver Dam Preschool | 12 |
| Beaver Dam/Littlefield Fire District | 12 |
| Beaver Dam Police Department | 12 |
| Birth to Five Helpline | 8, 19 |
| Canyonlands HealthCare | 14 |
| CASA Council Helping Children of Mohave County/La Paz County | 4 |
| Child Care Resource & Referral | 6 |
| Community Legal Services | 5 |
| Desert Rose Community Food Bank | 14 |
| Encircle Families | 9 |
| Family Support Coordination | 8 |
| First Things First | 8 |
| Health Start Program | 6 |
| High Risk Perinatal Program | 7 |
| La Leche League | 5 |
| Lantern..... | 8 |
| Littlefield/Beaver Dam School District | 12 |
| M.I.K.I.D. | 13 |
| Mohave County Department of Public Health | 13 |
| Mohave County Sheriff's Office | 12 |
| Parents As Teachers | 7 |
| Postpartum Support International Helpline | 13 |
| Pregnancy and Breastfeeding Hotline | 5 |
| Salvation Army Family Services | 5, 14 |
| Social Security Office | 5 |
| WIC Program | 14 |



www.swhd.org

"Nothing Out of the Question"
"Toda Pregunta es Buena"

1-877-705-KIDS (5437)

Call the Helpline to speak with an early childhood specialist, on duty Mon-Fri. 8:00 a.m. to 8:00 p.m.

The Birth to Five Helpline is a free service available to all Arizona families with young children, as well as parents-to-be, with questions about their infants, toddlers and preschoolers.

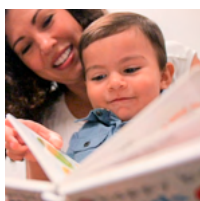
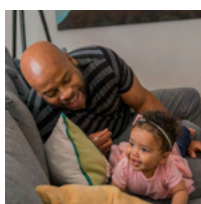
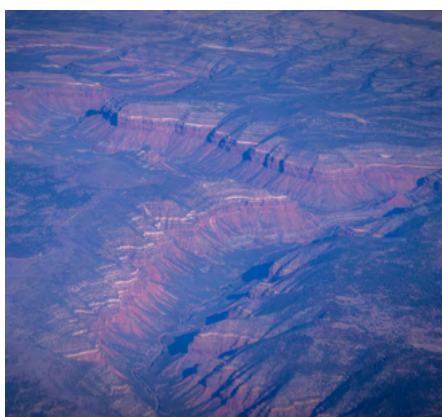
Topics addressed include but not limited to:

- Sleep
- Health and Nutrition
- Safety
- Challenging Behaviors
- Feeding and Eating
- General Child Development
- Potty Training/Learning
- Fussiness/Colic
- Parenting

An extension of the Birth to Five Helpline is the Fussy Baby program. This program provides telephone, home visiting and virtual video consultation and support to help families navigate challenges associated with hard-to-soothe infants, excessive crying, sleeping problems and feeding difficulties during their child's first year of life.

Download the Birth to Five Helpline app!





 FIRST THINGS FIRST